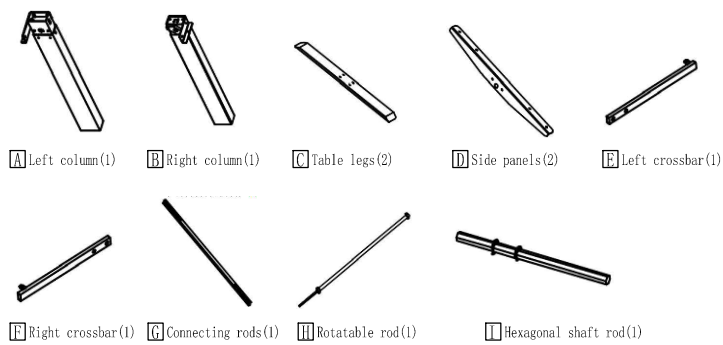


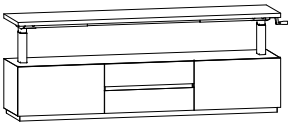
List of components



Parts list On a red ribbon are furniture installation accessories				
Serial number	Shape	Name	Quantity required for installation	Spare quantity
1		Hexagon socket screws (M6*10MM)	10	1
2		Hexagon socket screws (M6*16MM)	14	1
3		Hexagon socket screws (M6*14MM)	4	1
4		M6 wrench	1	0
5		M4 wrench	1	0
6		Foot pads	4	0
7		Shake handlebar	1	1
8		Rubber rings	2	0
9		Gasket	6	1



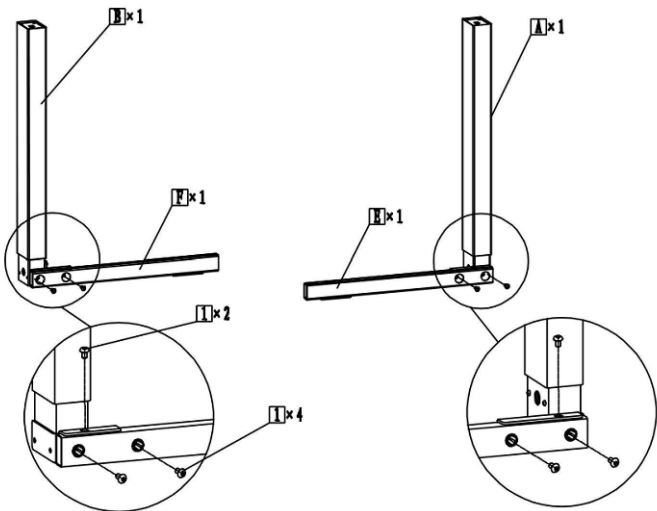
Assembly instructions



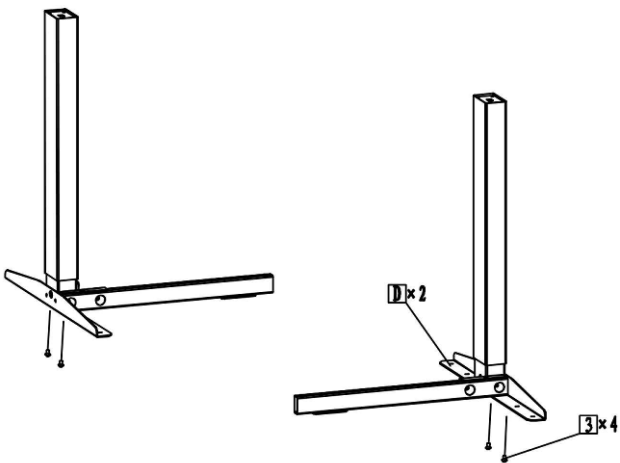
TS8252 Installation  
The number of people needed for installation: 2

- ① Please read the manual carefully before installing this product. And strictly follow the installation process
- ② Please take good care of this manual for your next installation
- ③ Note: Before installation, screw all the screws to 1/2 of the length of the installation. After all screws are half screwed in, tighten them all together.

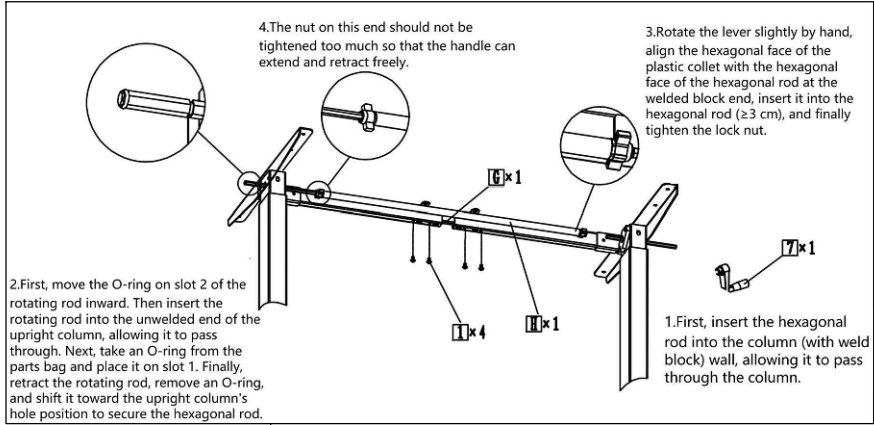
1. Install per the diagram.



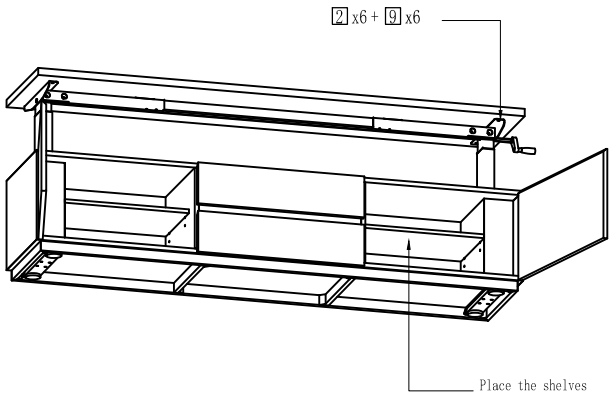
2. Install per the diagram.



3. Install per the diagram and turn the cabinet upside down and install the cabinet legs.



4. Install Desktop.



5. Installation completed.

