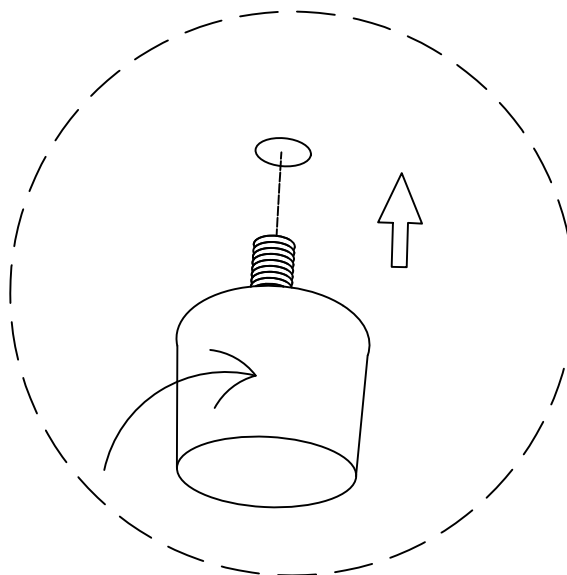
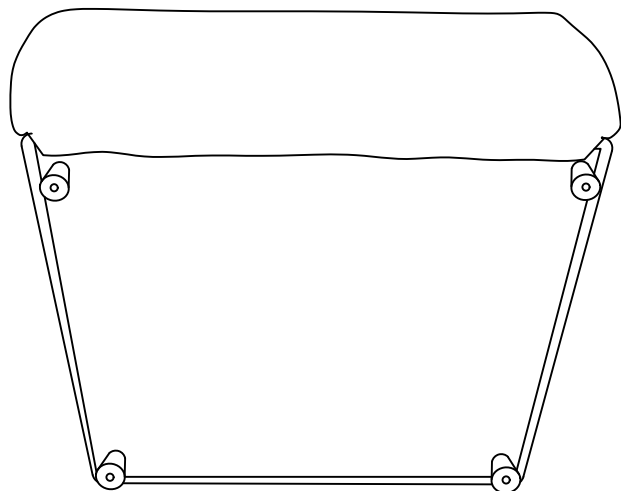
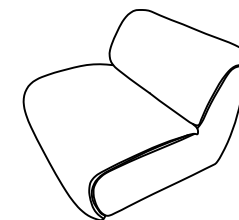


1. Attach the sofa legs to the bottom of the sofa.



Assembly instructions

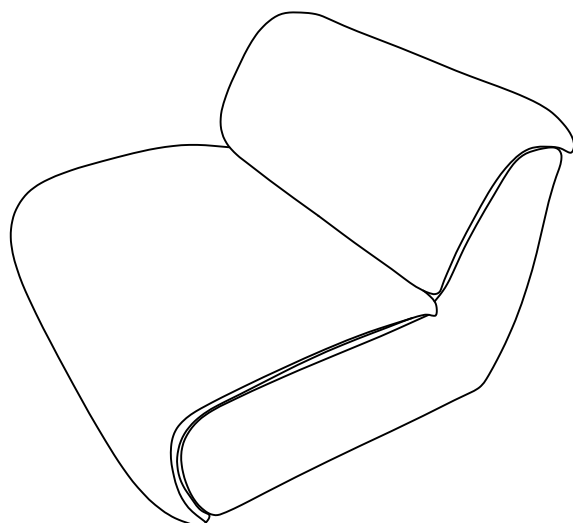


SF8207 Installation

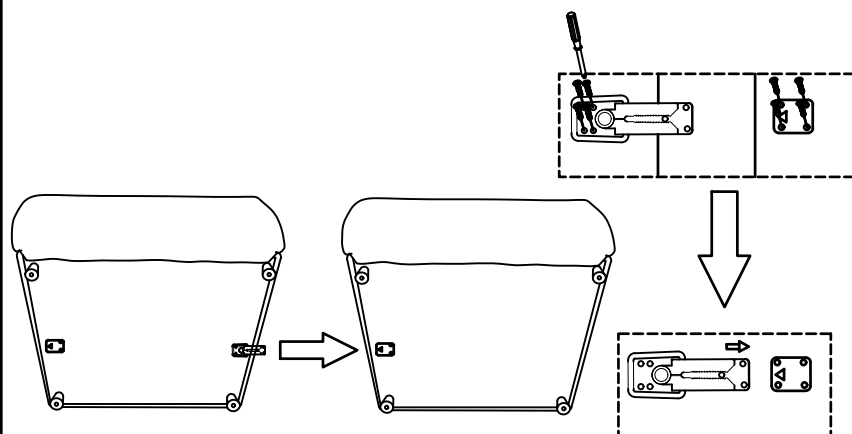
The number of people needed for installation: 2





- ① Please read the manual carefully before installing this product. And strictly follow the installation process
- ② Please take good care of this manual for your next installation
- ③ Note: Before installation, screw all the screws to 1/2 of the length of the installation. After all screws are half screwed in, tighten them all together.

2. The installation is complete



3.If you have purchased two or more pieces of this model of sofa, you can connect them together



Parts list		On a red ribbon are furniture installation accessories		
Serial number	Shape	Name	Quantity required for installation	Spare quantity
A		support leg	4	0
B		alligator clip	0	1
C		plastic clip	0	1
D		self-tapping screw(ST4*25mm)	0	8
E				
F				
G				