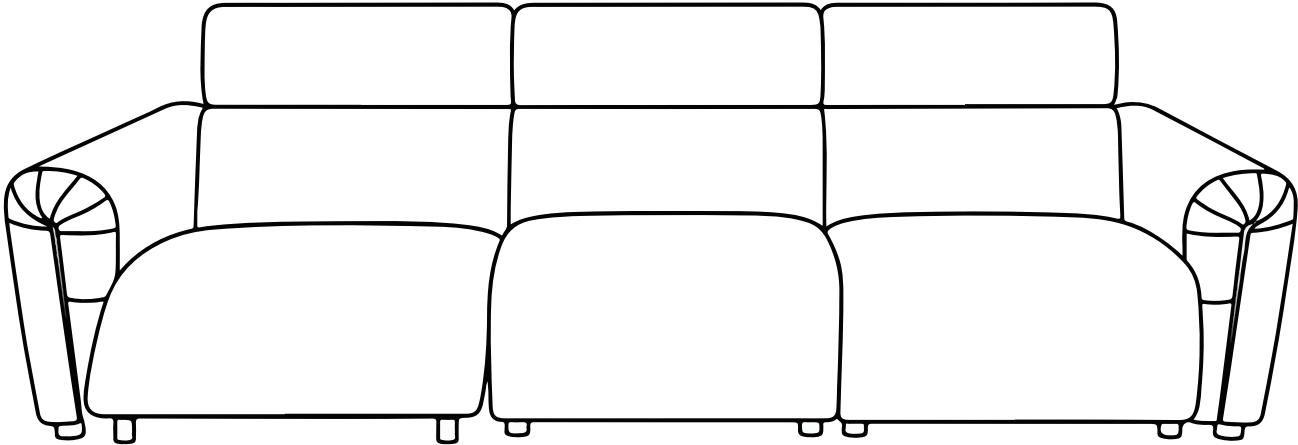


POVISON

Power Reclining Sofa

INSTRUCTION MANUAL



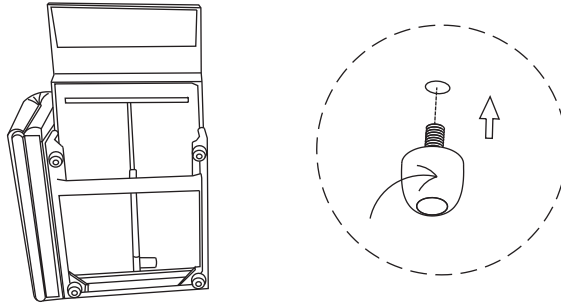
SSF8036

Ysolde-Power Reclining Sofa

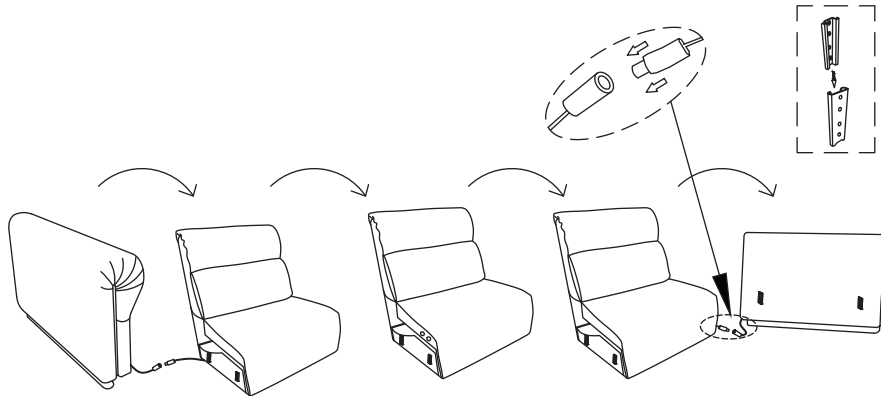
Inspired by modern mid-century elegant, Ysolde blends ergonomic high-back support with deep comfort. Its 170° near-flat power design lets you recline with absolute elegance—restorative, seamless, and beautifully at ease.

Installation in Just 4 Steps - Required 2 people for the assembly

1. Install the sofa legs onto the bottom of the sofa.

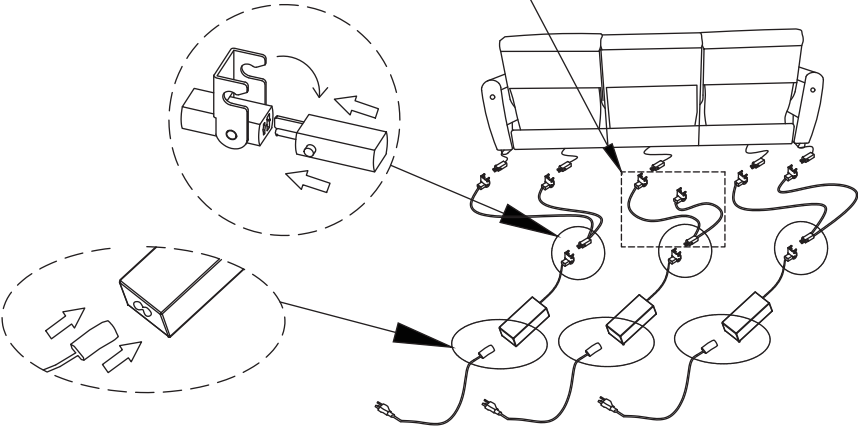


2. Connect the main sofa sections together, then connect the wiring between the armrest and its adjacent sofa seat. (If the wiring cannot be found, flip the entire sofa back to the position shown in Step 1 before locating the wiring.)

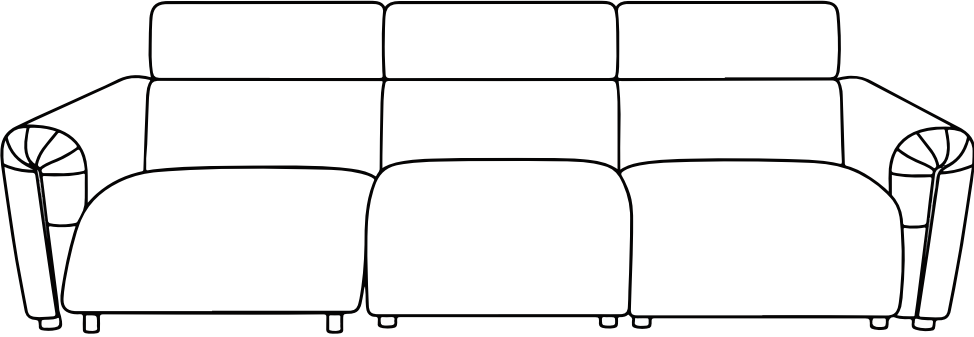


3. Connect the power cord.


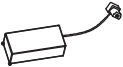


This 1-to-2 extension cord can be used or omitted as required.



4. Installation is complete.



Product Components Overview

Serial number	Picture	Item	QTY
A		Sofa Legs	12
B		Power Adapter	3
C		Y-splitter control cable	3
D		Power Cord	3

Notes:

- 1.Please read the manual carefully beforeinstalling this product. And strictly follow theinstallation process
- 2.Please take good care of this manualfor your next installation
- 3.Before installation, screw all thescrews to 1/2 of the length of the installation.After all screws are half screwed in, tightenthem all together.

Have a question? We're here to help:

<https://www.povison.com/help-center/contact>

Customer Service Number: +1-669-208-1888

Customer Service Email: supportingcenter@povison.com

Customer Service Hours: EST 10 am - 5.30 pm

Actual product may differ. Read and retain this manual.

V1.1