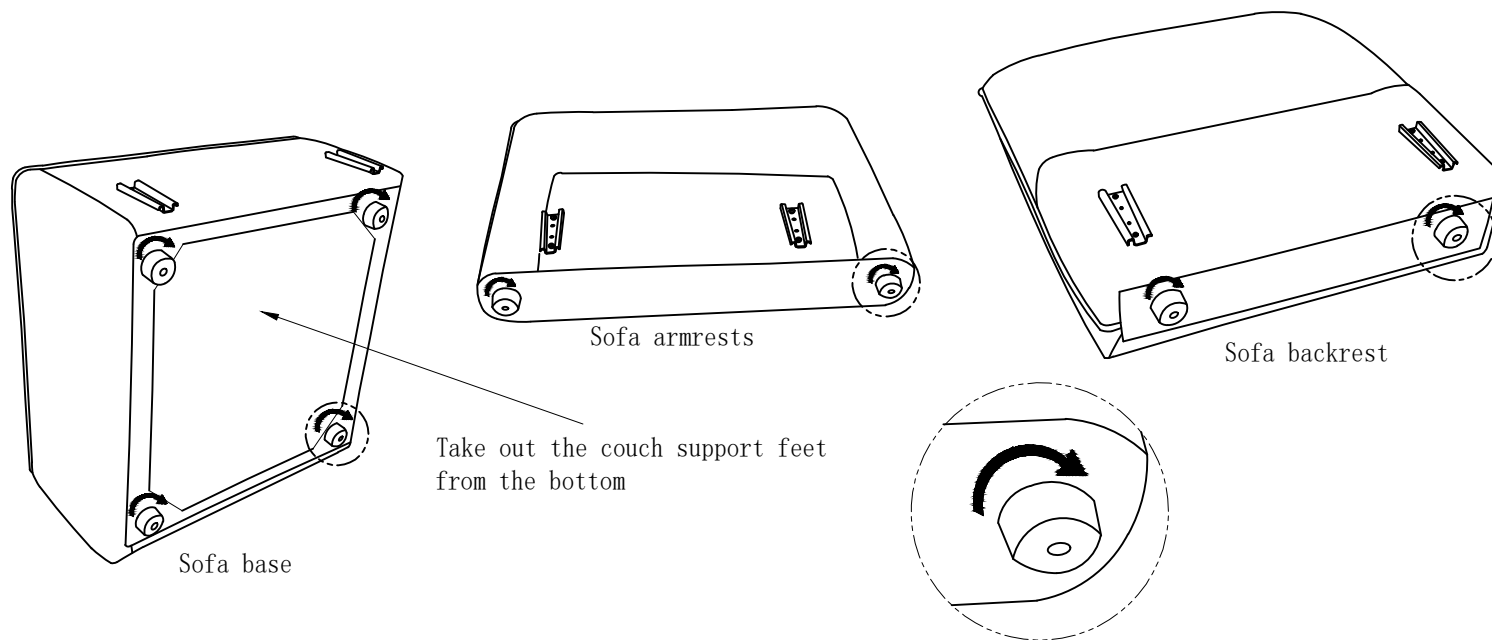
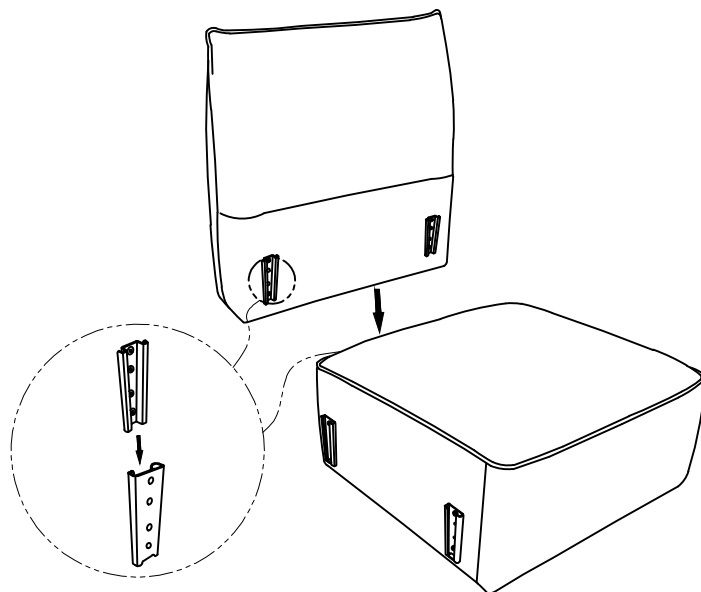


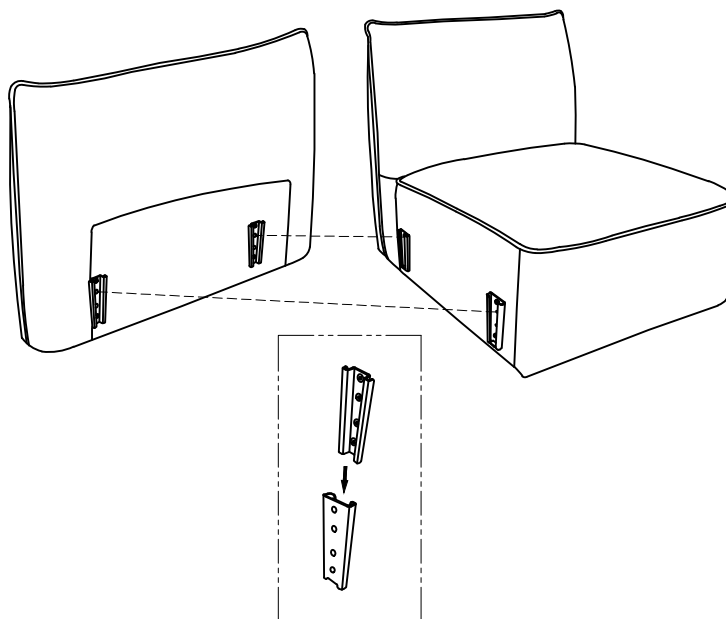
1. Install support legs (required for each sofa module)



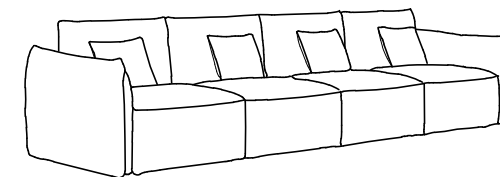
2. Install the sofa backrest



3. Install the armrest



Assembly instructions



SF8126 Installation

The number of people needed for installation: 2

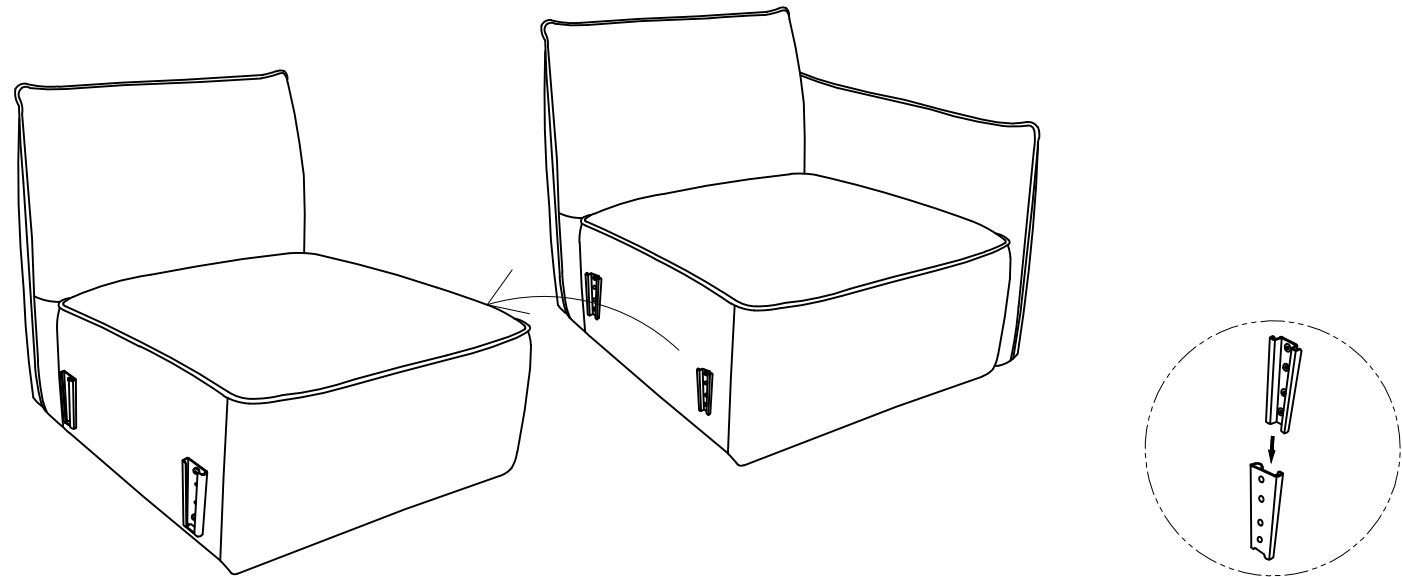
- ① Please read the manual carefully before installing this product. And strictly follow the installation process
- ② Please take good care of this manual for your next installation
- ③ Note: Before installation, screw all the screws to 1/2 of the length of the installation. After all screws are half screwed in, tighten them all together.

Parts list

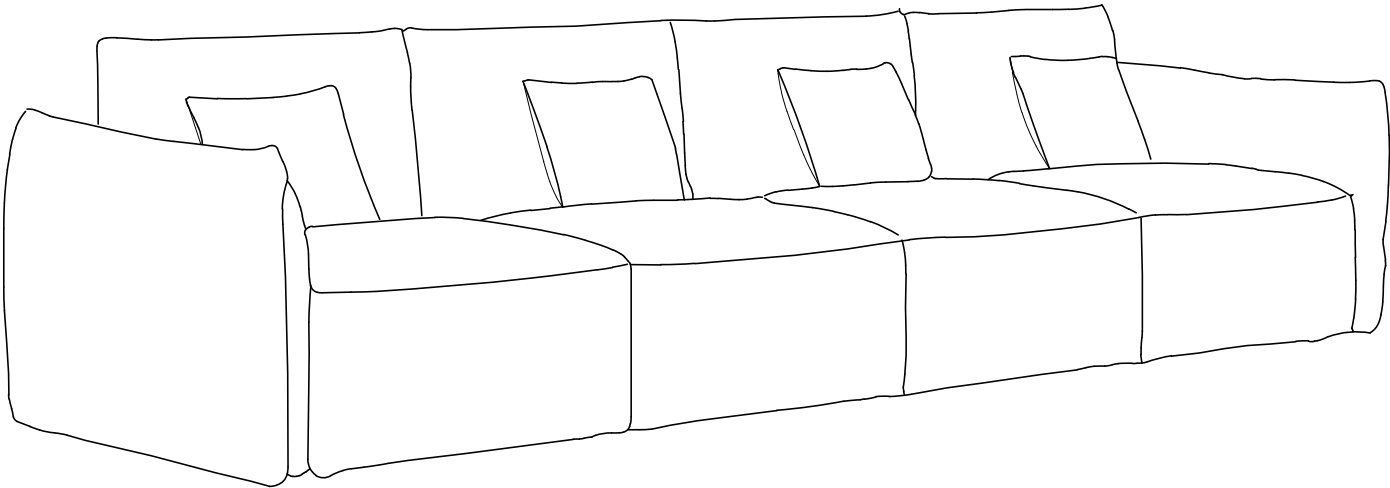
On a red ribbon are furniture installation accessories

Serial number	Shape	Name	Quantity required for installation	Spare quantity
A		Support leg		
B				
C				
D				
E				
F				
G				

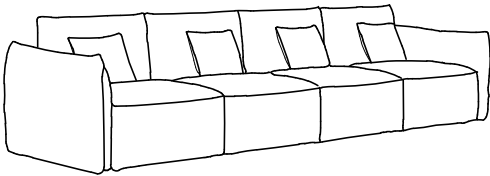
5. Installation between sofa modules (all sofa modules, after the group of backrest or armrest, according to the purchase of sofa matching effect combination)



6. installation complete



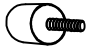
Assembly instructions



SF8126 Installation

The number of people needed for installation: 2

- ① Please read the manual carefully before installing this product. And strictly follow the installation process
- ② Please take good care of this manual for your next installation
- ③ Note: Before installation, screw all the screws to 1/2 of the length of the installation. After all screws are half screwed in, tighten them all together.

Parts list		On a red ribbon are furniture installation accessories		
Serial number	Shape	Name	Quantity required for installation	Spare quantity
A		Support leg		
B				
C				
D				
E				
F				
G				