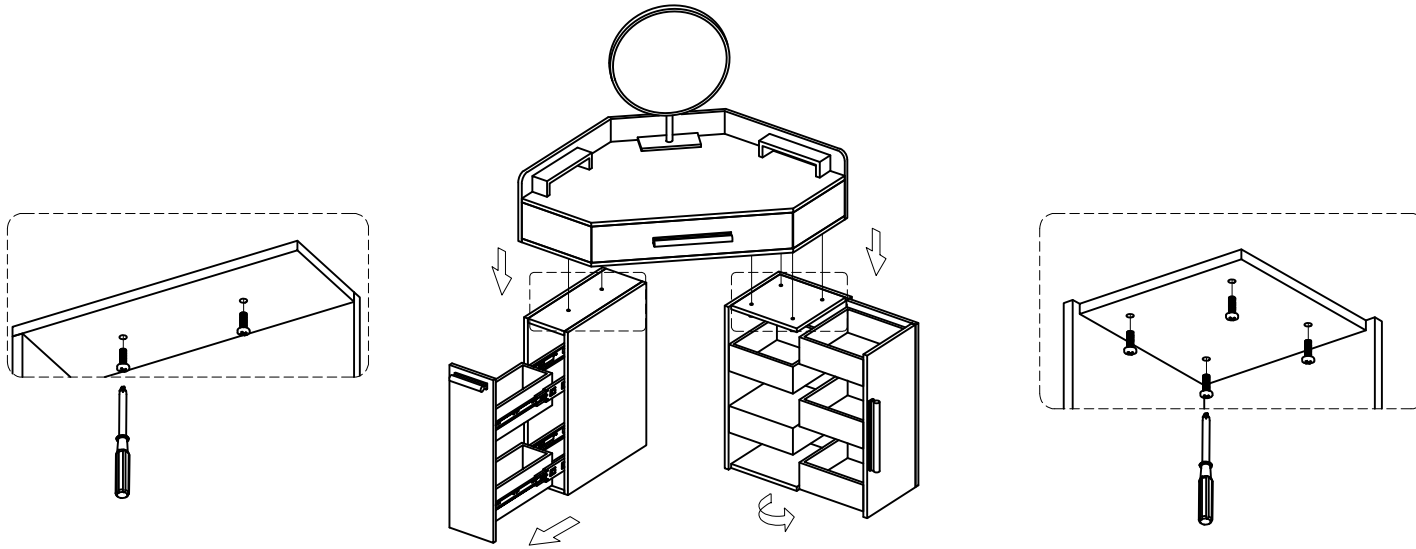
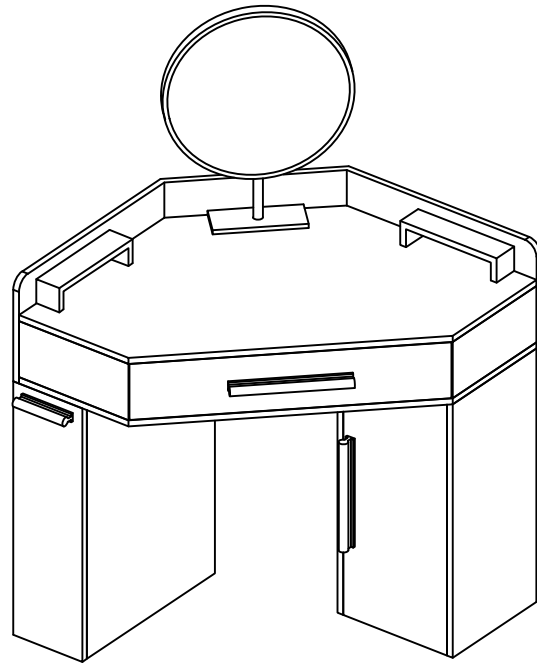


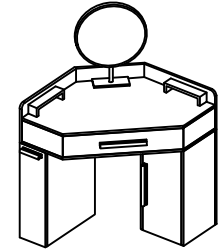
1. Place the cabinet in the corresponding position on the bottom of the dressing table, open the drawer, and align the holes inside the drawer with the holes at the bottom of the dressing table. Place a cross mechanical screw and tighten the screw with a screwdriver.



2. Installation completed.



Installation instruction




VB8033DW100 Installation

The number of people needed for installation: 2

- ① Please read the manual carefully before installing this product. And strictly follow the installation process
- ② Please take good care of this manual for your next installation
- ③ Note: Before installation, screw all the screws to 1/2 of the length of the installation. After all screws are half screwed in, tighten them all together.

Parts list

On a red ribbon are furniture installation accessories

Serial number	Shape	Name	Quantity required for installation	Spare quantity
A		Cross mechanical screw (M6*25mm)	6	0
B				
C				
D				
E				
F				
G				

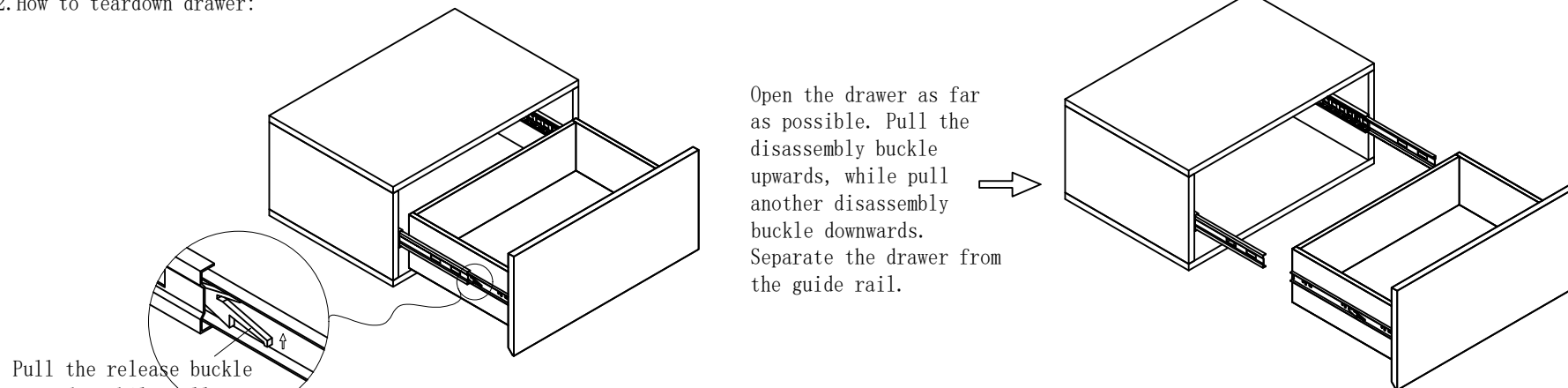
Disassembly instruction for three-section side-mounted rail drawer

POVISON

1. Three-section side-mounted rail drawer.



2. How to teardown drawer:



3. How to install drawer:

